

MUP60A-1W12V(Product No.: 103200370101)

Summary

MUP60A-1W12V is a constant voltage mode output LED driver. This driver can be controlled by external signal (0/1-10V active signal, adjustable resistance and PWM signal) to achieve a smooth dimming effect.

Product Feature

- Single channel constant voltage output,5.0A Max
- Support 3-in-1 dimming mode(0/1-10V active signal, adjustable resistance and PWM signal)
- High input voltage of 120VAC - 277VAC
- Dimming range of 1-100%, and dimming effect smooth, no flicker
- 100% output when no dimming signal input, can be used as normal power supply
- Over load protection; over voltage protection; short circuit protection; Over temperature
- IP20, suitable for indoor LED lighting application


**Class 2
SELV**
Application


Wall Washer



LED Strip Light



LED Tube



Underground Light

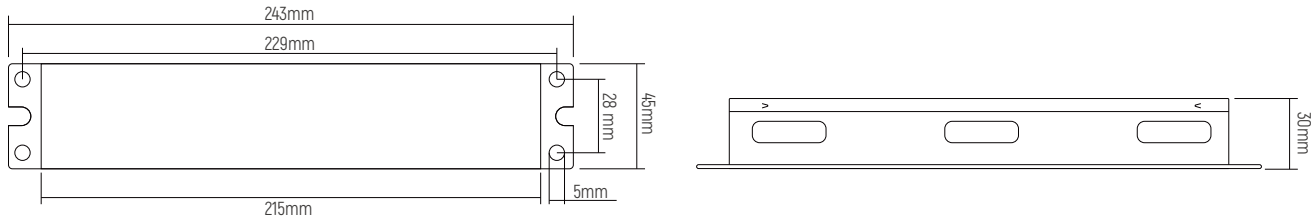


AR111 Venture Light

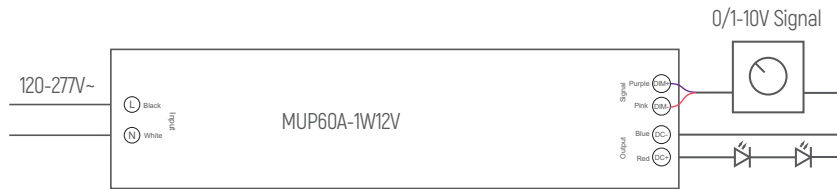
Technical Parameters

Model	MUP60A-1W12V	
Input	Efficiency	87%@120VAC, Full load
	Voltage	120VAC-277VAC
	Frequency	50/60Hz
	Power Factor	>0.99@120VAC, Full load
	Current	0.7Amax@120VAC, Full load
	Inrush Current	Cold start, 45A@120VAC
	Standby power	< 2.5W
Output	Channel	1
	Voltage	12VDC
	Current	5.0A
	Power	60W
	Frequency	1kHz PWM
	R & N (Max)	<300mV Vp-p
	Turn On Delay Time	<0.5s from power on to Iout>0 @120Vac
Function	Dimming type	0/1-10V active signal, adjustable resistance and PWM signal
	Dimming range	1%-100%
Protection	Over Voltage	Hiccup, recovers after fault condition is removed
	Over load	Hiccup, recovers after fault condition is removed
	Short circuit	Hiccup, recovers after fault condition is removed
	Over temperature	Shut down and auto-restart after normal temperature
Safety&EMC	Surge	L-N:2.5KV
	Withstand Voltage	I/P-O/P: 3000VAC/1min/5mA I/P-Gnd: 1500VAC/1min/5mA O/P-Gnd: 500VAC/1min/5mA
	Safety standards	UL8750/UL1310/CSA25013,CSA class P
	EMI Eission	EN55015,EN61000-3-2 Class C,IEC61000-3-3
	EMC Immunity	FCC class B(120V)/class A(277V)
Others	Working Temp.	-20°C~60°C
	Storage Temp.; Humidity	-40°C~85°C, 20-90%RH
	Tc	90°C
	Material	Metal
	IP Rating	IP20
	Lifetime	50,000h@tc:70°C
	Warranty Condition	5 years
	Switch Cycle	>25,000 times
	Packing Size	Net weight: 700g±5%/PCS; 20PCS/Carton; 14.5kg±5%/Carton; Carton Size: 300*268*168mm(L*W*H)
Dimension	243*45*30mm(L*W*H)	

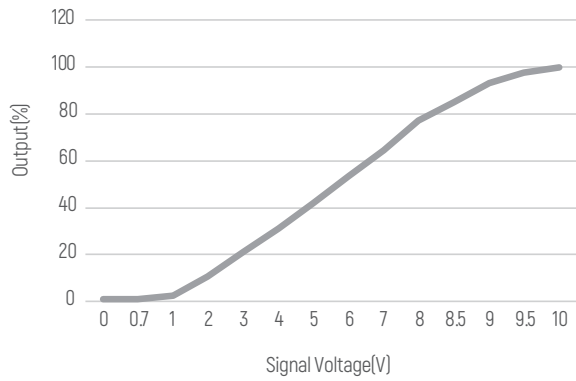
Dimension(mm)



Wiring Diagram



Dimming Curve



Cautions

- 1.The product shall be installed and serviced by a qualified person.
- 2.This product is non-waterproof. Please avoid the sun and rain. When installed outdoors please ensure it is mounted in a water proof enclosure.
- 3.Good heat dissipation will prolong the working life of the controller. Please ensure good ventilation.
- 4.Please check if the output voltage and current of any LED power supplies used comply with the requirement of the product.
- 5.Please ensure that adequate sized cable is used from the controller to the LED lights to carry the current. Please also ensure that the cable is secured tightly in the connector.
- 6.For safety consideration, PVC or rubber cord of 0.75-1.5mm² is recommended for input and output terminal(s) (excluding signal terminals). Flat power cord is not suitable.Ensure all wire connections and polarities are correct before applying power to avoid any damages to the LED lights.
- 7.If a fault occurs please return the product to your supplier. Do not attempt to fix this product by yourself.

※ The contents of this manual are updated without prior notice. If the function of the product you are using is inconsistent with the instructions, the function of the product shall prevail.Please contact us if you have any questions .