

Ebus-Node

Product Features

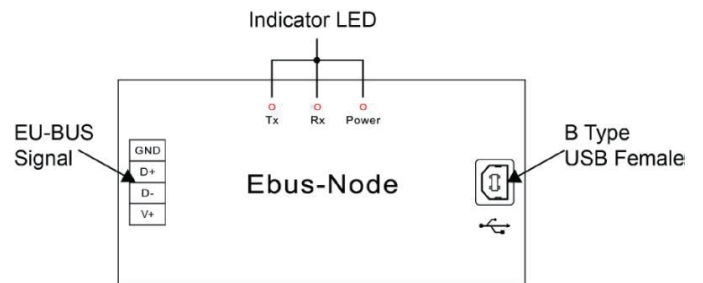
- Comply with EU-BUS protocol developed by EUCHIPS
- Automatically scan devices connected to debugger
- Achieve group control and scene control via PC software
- Supplied via EU-BUS bus
- Can define the function for panel access system
- Support remote update firmware

Technical Parameters

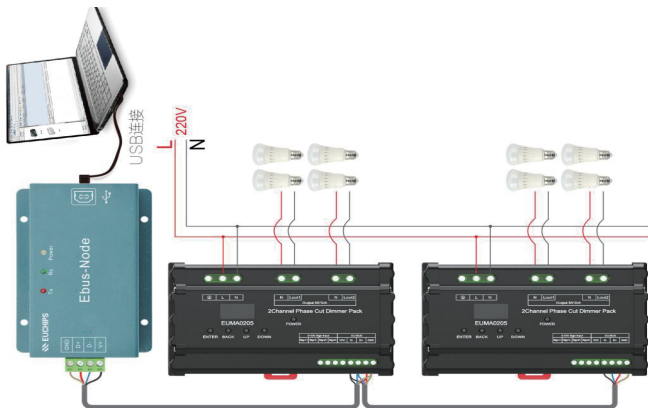
Item	Parameter
Input Voltage	12V DC
Transmission Signal	EU-BUS Signal
Power Indication(Power)	LED Continuous On
Communication Indication(Rx,Tx)	LED Flashing
Size(mm)	108*72*23
G.W	200g
Work Temp.	-20°C-50°C



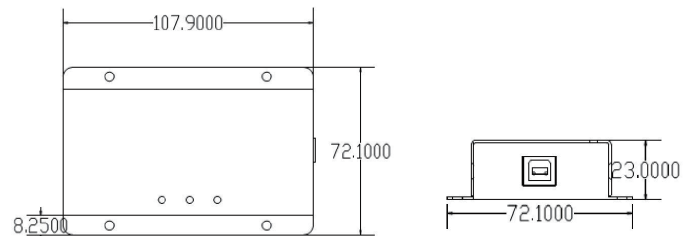
Appearance



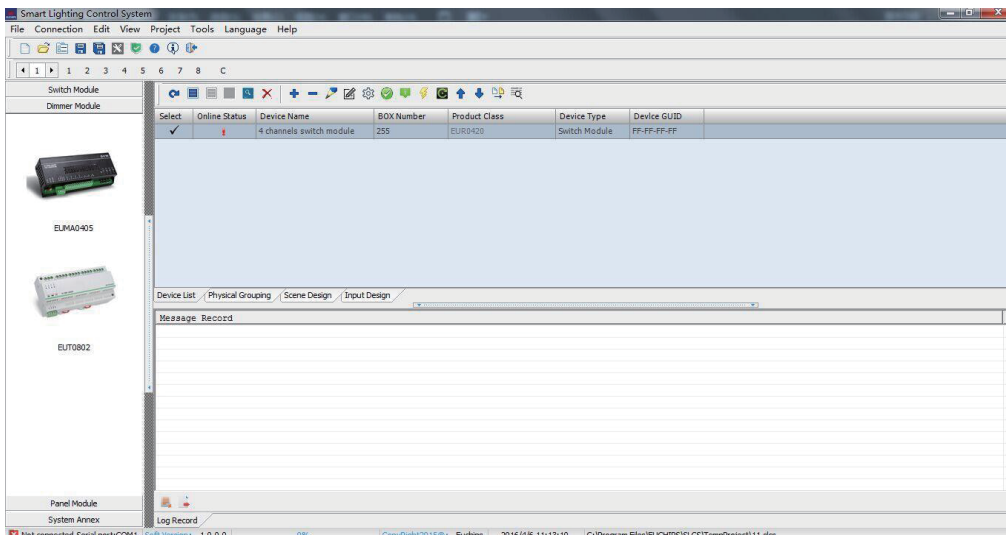
Wiring Diagram



Size(mm)



PC Software



This controlling software is installed in the PC, it communicates and controls Ebus-node by a usb line. The fast communication and convenient Maintenance make it easier for operation between user and machine.